

National Park
Western Chugoku
Mountainous

One of the Top 5 Special Valleys
of Scenic Beauty in Japan

Sandankyo
Hiking Map

Mt. Osorakan

The highest peak in Hiroshima
1346m



The highest mountain in the prefecture and a natural snow ski resort - one of the best in west Japan.

Recommended course

Visitors' Course A (one way 5 minutes)

The best and quickest sightseeing! Nagabuchi, Shimaitaki, Tatsunoguchi, clear waters and superb views! Please come again!
Sandankyo Main Entrance⇒Shimaitaki⇒Tatsunoguchi

Route B - Best for Couples(one way 20 minutes)

Pledge your love by Fufubuchi and by the Ishido Resthouse take time to look up together at heaven!
Sandankyo Main Entrance⇒Shimaitaki⇒Tatsunoguchi⇒Meotobuchi and Ishido

Another Push! Route C Beautiful Gorge Course

for the proficient hiker (one way 50 minutes)

Highly recommended! The popular highlight! Sandankyo Omote Ginza Course!
Sandankyo Main Entrance⇒Shimaitaki⇒Tatsunoguchi⇒Meotobuchi and Ishido
⇒Kurobuchi Secluded Area (the entrance fee includes boat fare for a wonderful feeling of exploration)

Intermediate Level Course D(Round trip 3 hours)

Riding into the central valley by car! See 3 picturesque spots on foot.
[Mizunashi Parking] ⇒ Mizunashi guchi ⇒ Sarutobi (with boat fare)
⇒ Nidan Falls ⇒ Sandan Falls ⇒ Mizunashiguchi ⇒ [Mizunashi Parking]

Gorge Trekking Course E (round trip 5 hours)

Explore the beautiful scenery! Use the return bus for those with the strength of elementary to high school students.
Sandankyo Main Entrance⇒Shimaitaki⇒Tatsunoguchi⇒Meotobuchi and Ishido
⇒ Kurobuchi (with boat fare) ⇒ Sarutobi (with boat fare) ⇒ Nidan Falls ⇒ Sandan Falls
⇒ Mizunashiguchi (paid shuttle bus) ⇒ Main Entrance

This environmentally friendly campground makes use of its natural surroundings by restricting deforestation and utilizing solar energy and hydro power.
☎0826-28-7270

It is wonderful that the torrent makes triple waterfall. The color contrast between the fall foliage and the waterfall will be sure to impress you.

The 20m high wall of rock, narrowing to widths of as little as 2m, towers over the surrounding landscape. Dim and cool even during the day, this mystical place will leave you with a feeling of wonder. Nidanaki is located in a secluded area making it necessary to take the Sarutobi boat to get there. Yet the waterfall is still a spectacular sight.

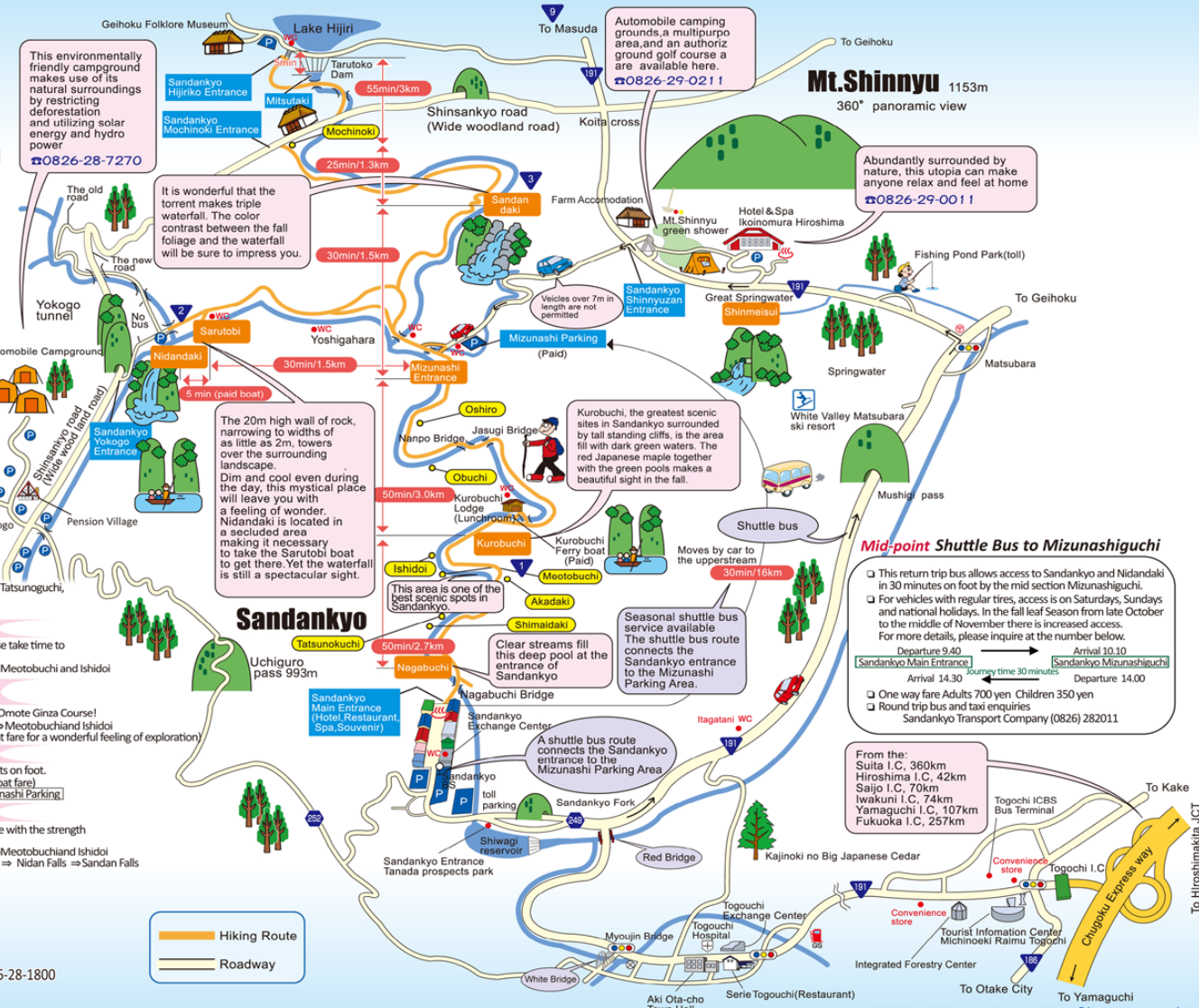
Automobile camping grounds, a multipurpose area, and an authorized golf course are available here.
☎0826-29-0211

Abundantly surrounded by nature, this utopia can make anyone relax and feel at home.
☎0826-29-0011



Information

Akiota-cho Tourism Association TEL 0826-28-1800



Mid-point Shuttle Bus to Mizunashiguchi

☐ This return trip bus allows access to Sandankyo and Nidanaki in 30 minutes on foot by the mid section Mizunashiguchi.
☐ For vehicles with regular tires, access is on Saturdays, Sundays and national holidays. In the fall leaf season from late October to the middle of November there is increased access. For more details, please inquire at the number below.
Departure 9:40 → Arrival 10:10
Sandankyo Main Entrance → Sandankyo Mizunashiguchi
Arrival 14:30 → Journey time 30 minutes → Departure 14:00
☐ One way fare Adults 700 yen Children 350 yen
☐ Round trip bus and tax inquires Sandankyo Transport Company (0826) 282011

From the:
Saita I.C. 360km
Hiroshima I.C. 42km
Saijo I.C. 70km
Iwakuni I.C. 74km
Yamaguchi I.C. 107km
Fukuoka I.C. 257km



We hope that you enjoy your trip. Please come again!