

# English [英語版]

The Ota River Western Chugoku Mountainous National Park and Kawanami Route Guide

# Okuaki Akiota Guide Map

### Key

- Spa/Hot Spring
- Restroom
- Gift Shop
- Ota River Kawanami Scenic Route
- Tourist Information
- National Road
- Prefectural Road

**Shimane Pref. Masuda Town**

**Mt. Osorakan**  
Hiroshima Prefecture's highest peak 1346m

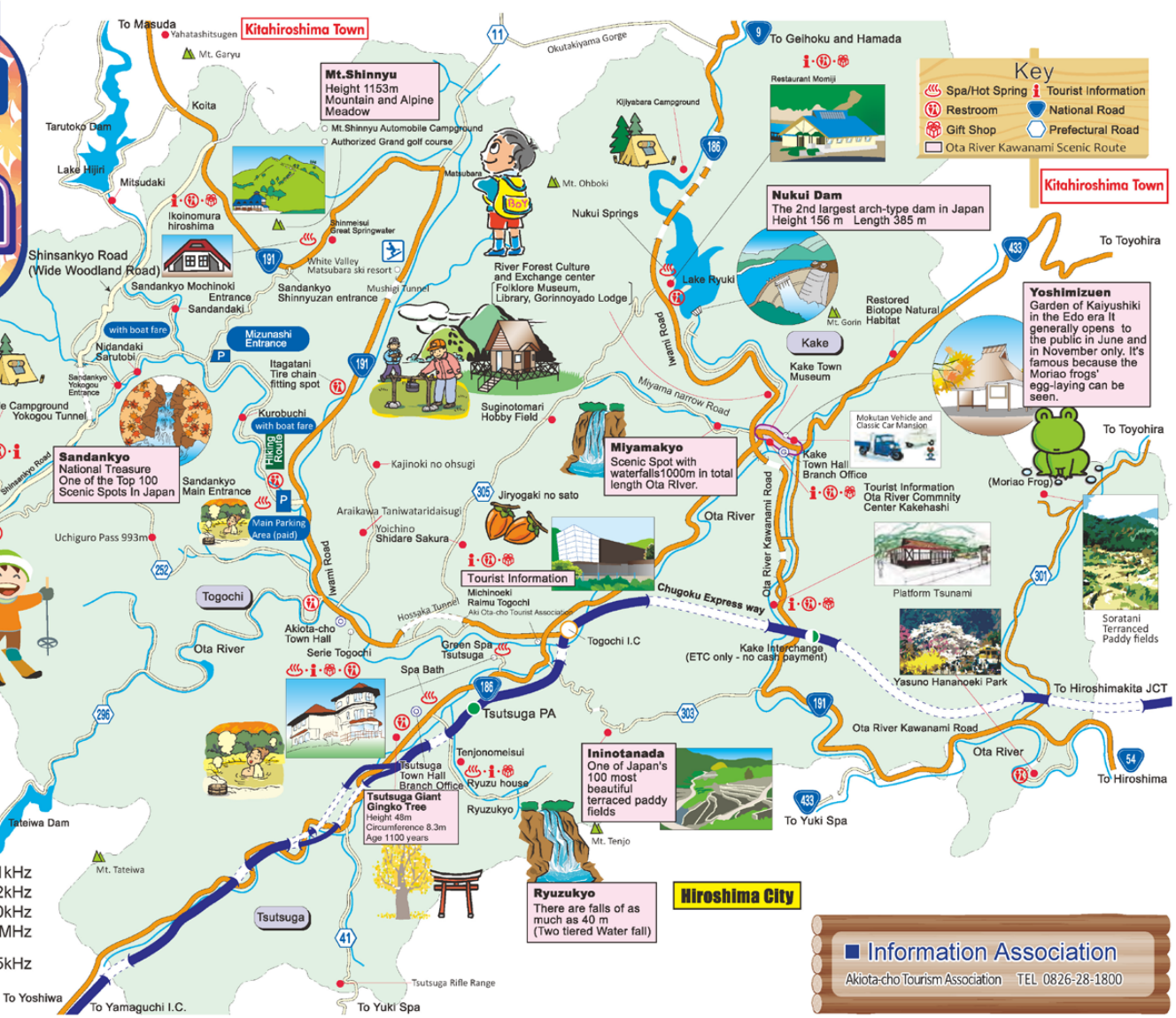


**Sandankyo National Treasure**  
One of the Top 100 Scenic Spots in Japan

**Hatsukaichi City**

### Radio Station

- NHK #1 (General) 1071kHz
- NHK #2 (Education) 702kHz
- RCC Chugoku Broadcasting 1350kHz
- Hiroshima FM 86.3MHz
- American Forces Network 1575kHz



**Kitahiroshima Town**

**Nukui Dam**  
The 2nd largest arch-type dam in Japan  
Height 156 m Length 385 m

**Yoshimizu-en**  
Garden of Kaiyushiki in the Edo era. It generally opens to the public in June and in November only. It's famous because the Morio frogs' egg-laying can be seen.



**Miyamakyo**  
Scenic Spot with waterfalls 1000m in total length Ota River.

**Tourist Information**  
Michinoeki Raimu Togochi  
Aki Ota-cho Tourist Association

**Ininotanada**  
One of Japan's 100 most beautiful terraced paddy fields

**Ryuzukyo**  
There are falls of as much as 40 m (Two tiered Water fall)

**Hiroshima City**

### Information Association

Akiota-cho Tourism Association TEL 0826-28-1800